

# Bock HG6/1240-4 S (x3) Cool/freeze installation

## Specifications

Brand	Bock
Type	HG6/1240-4 S (x3) Cool/freeze installation
Refrigerant	Freon
kW at 0°C/+40°C	261.60
kW at -5°C/+40°C	216.30
kW at -10°C/+40°C	176.7
kW at -20°C/+40°C	113.40
kW at -30°C/+40°C	67.80
On steel base frame	✓
Pressure safety switches	✓
Hp/Lp/Op	
Pressure gauges	✓
Hp/Lp/Op	
Liquid receiver	✓
Liquid receiver ltr.	40
Oil separator	✓
Remarks	Our capacity table is based on Manufacturer spec. We would like to know which refrigerant is in your system
Package / Rack	✓
Sizes	920x500x400 mm (LxWxH)



Stock

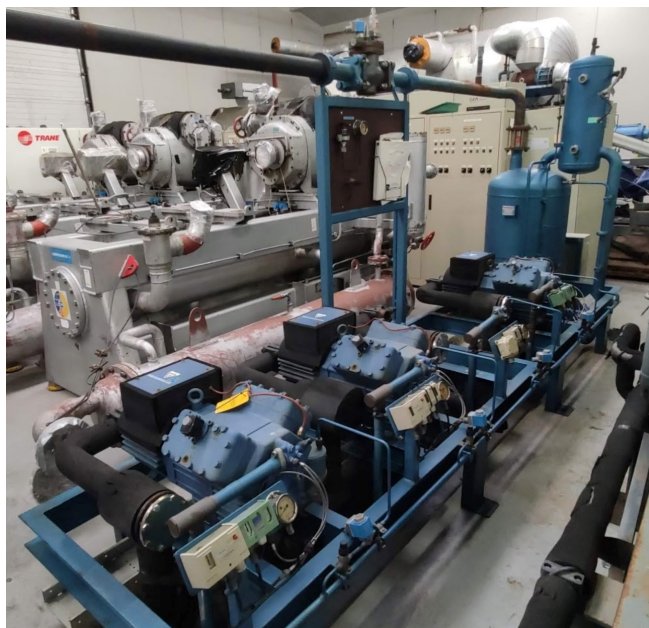
1

---

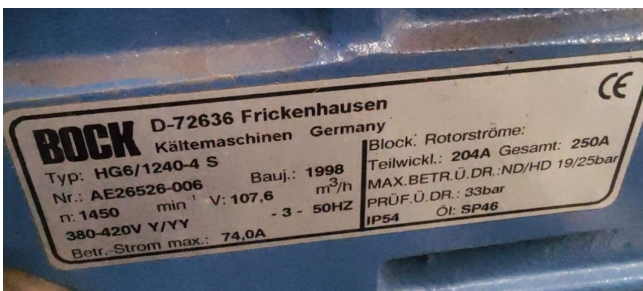
## Description

### **Used Bock HG6/1240-4 S (x3) Cool/freeze installation**

Used but in very good condition Bock cool/freeze installation with 3 pieces HG6/1240-4 S semi hermetic reciprocating compressors and consisting components \*Why choose for HOSBV? We're not only the largest used refrigeration specialist in Europe, but also, we deliver all equipment including an extensive test, warranty and industrial cleaning. Optional we can arrange shipment and export documents.







## HGX6/1240-4 S

Engine: 380-420V Y/Y -3- 50Hz PW

GEA Commercial Compressors



Subject:

### Performance data table

Application: Refrigeration & AC  
Reference temperature: Dew point  
Supply frequency: 50 Hz  
Voltage: 400 V  
Suction gas temperature: 20 °C  
Subcooling (outside cond.): 0 K

tc [°C]	to [°C]									
	10.0	5.0	0.0	-5.0	-10.0	-15.0	-20.0	-25.0	-30.0	
30.0	Q [W] P [kW] I [A]	123000 27.20 53.00	103000 26.00 51.40	85300 24.50 49.50	70000 22.80 47.40	56800 20.90 45.20	45300 18.90 42.90	35600 16.80 40.80	27400 14.80 38.70	
35.0	Q [W] P [kW] I [A]	114000 29.80 56.80	95000 28.20 54.30	78700 26.30 51.70	64500 24.20 49.10	52100 22.00 46.40	41600 19.70 43.80	32600 17.30 41.30	25000 15.00 39.00	
40.0	Q [W] P [kW] I [A]	105000 32.30 60.10	87200 30.20 57.10	72100 27.90 53.90	58900 25.40 50.70	47600 22.90 47.50	37800 20.30 44.50	29600 17.70 41.70	22600 15.20 39.20	
45.0	Q [W] P [kW] I [A]	95300 34.60 63.50	79500 32.10 59.70	65600 29.40 55.90	53500 26.60 52.10	43100 23.70 48.50	34200 20.90 45.10	26700 18.10 42.00	20400 15.40 39.30	
50.0	Q [W] P [kW] I [A]	86300 36.80 66.70	71800 33.80 62.30	59100 30.70 57.80	48100 27.60 53.50	38700 24.50 49.50	30800 21.40 45.70	23800 18.40 42.40	18100 15.50 39.40	
55.0	Q [W] P [kW] I [A]	77400 38.80 69.80	64200 35.40 64.70	52700 32.00 59.60	42800 28.60 54.80	34300 25.20 50.30	27100 21.80 46.20	21000 18.60 42.60	15900 15.60 39.50	

☐ Supplementary cooling or reduced suction gas temperature ( $\Delta t_{oh} < 20K$ )

to Evaporating temperature  
tc Condensing temperature  
Q Compressor refrigeration capacity  
P Power consumption  
I Current draw